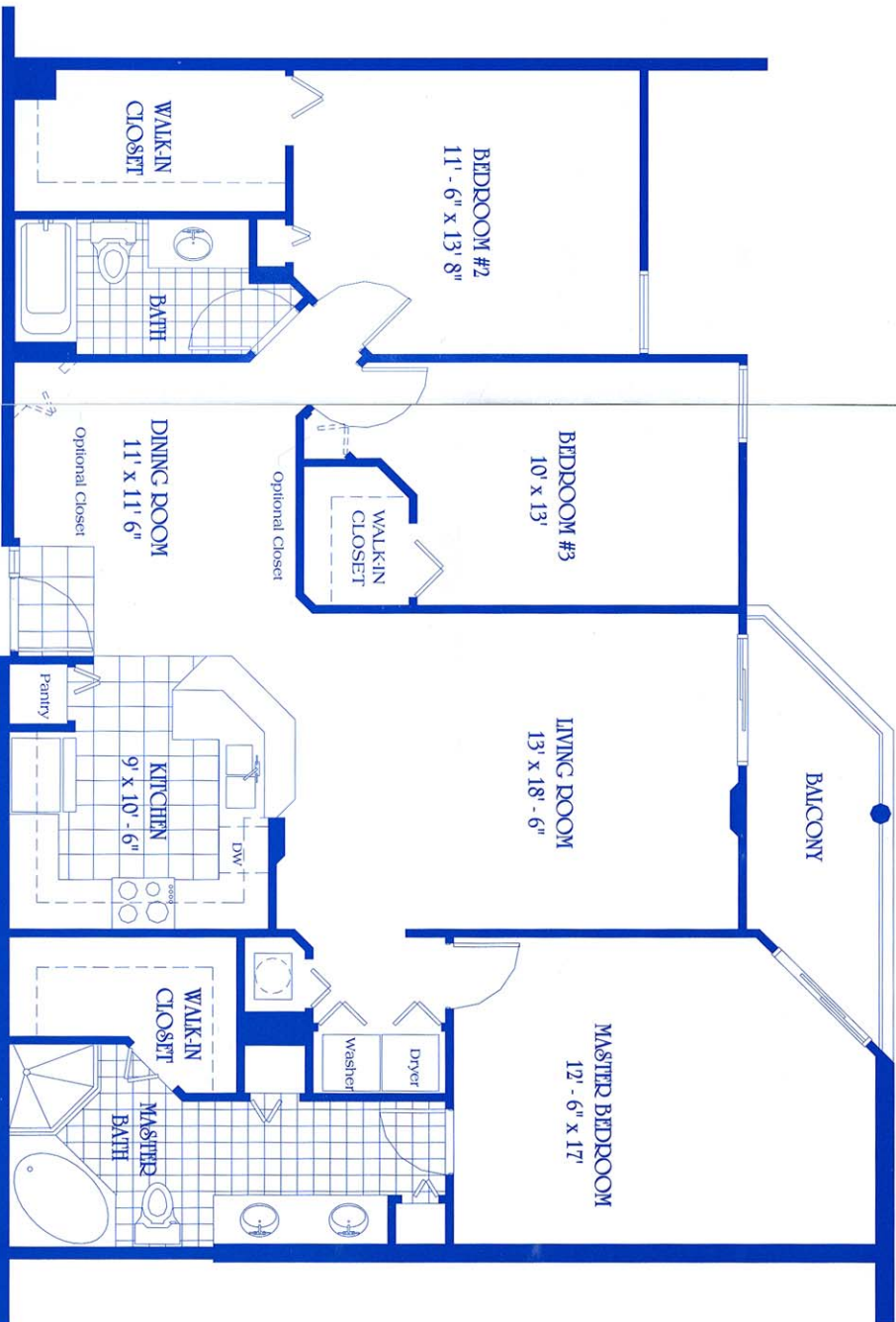
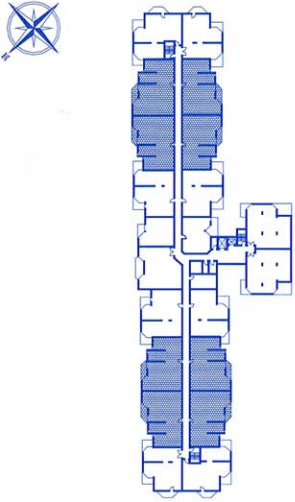


3 BEDROOM SUITE / 2 BATH

Conditioned Living Area =	1,500 s.f.
Balcony Area	= 82 s.f.
Total Area	= 1,582 s.f.



Dropped soffits required for services have not been shown and walls at columns may be square. Fryer the shown may be reduced with angle in left corner.

San Remo



All dimensions and areas are approximate. Views and feature presentations may vary with the location of home within buildings. Developer reserves the right to alter designs or substitute materials of comparable value as deemed advisable or necessary by builder or architect.